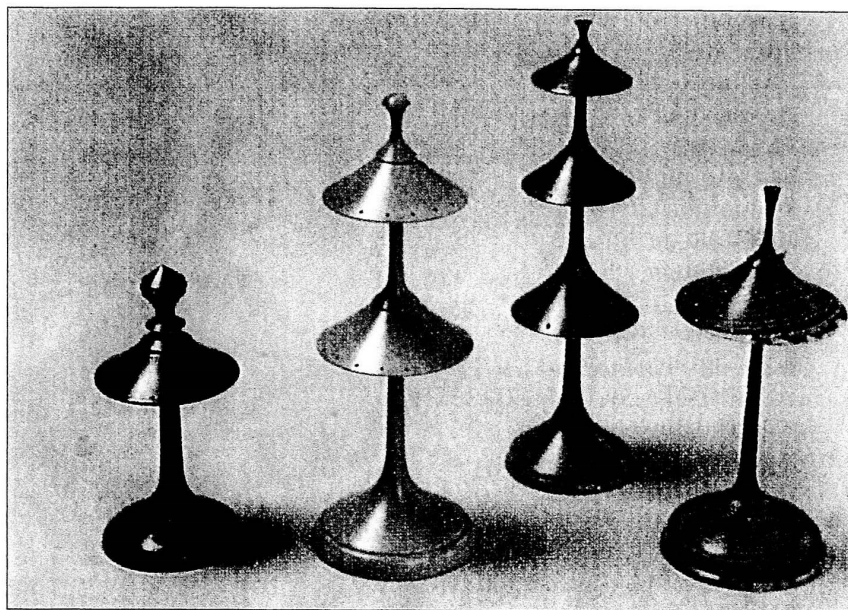


*Single, double and triple-deck stands.*

Here's a delightful project from John Lancaster which will keep you busy for an hour or so, and may even elicit a favourable response from your wife or girlfriend

# JEWEL OF A STAND



*Single deck stand with earrings.*



I used locally-grown timbers such as holly, yew, ash and laburnum for my earring stands, but any good quality wood will do.

Before starting, sharpen a roughing gouge, a 10mm,  $\frac{3}{8}$ in super-flute, a 6mm,  $\frac{1}{4}$ in spindle gouge ground to a fingernail shape, a 13mm,  $\frac{1}{2}$ in skew chisel and a parting tool. Treat yourself to a new 1.5mm,  $\frac{1}{16}$ in drill for a clean-cut hole for the earrings.

The stand is turned in five stages. Check the lathe speed is set to about 1,200 rpm. Select a blank 150mm long x 75mm square, 6 x 3in and mount it in your chuck or jam chuck.

Bring up the revolving tailcentre for support and turn the blank to a cylinder with a roughing gouge. Mark 10mm,  $\frac{3}{8}$ in from the chuck for parting off later.

## **Roughing down**

After roughing down, remove the tailstock. It's advisable to check that the blank is secure. Re-tighten the chuck if necessary.

Now for stage two – turning the top. Measure about 45mm,  $1\frac{3}{4}$ in from the tailstock and mark the position of the top. Turn to shape. If time is important, keep the knob



## PROJECT

plain, otherwise let your imagination run wild.

A concave shape too, looks good. I use wet and dry abrasive to sand.

Stage three is the tricky bit. To gain access to cut under the top, remove waste approximately 40mm, 1½in back from the top, keeping the stem about 20mm, ¾in thick for support. Undercut slightly with a 6mm, ¼in fingernail gouge. This gives delicacy to the finished item.

Shape the slender stem to the required thickness a little at a time. Don't try to cut the stem all in one go. Work from the top towards the headstock a few millimeters at a time up to stage four.

### **Finish**

Sand and finish. For the more accomplished turner, a skew chisel would finish the stem, but extreme care is needed not to 'dig-in.'

Now for stage four. Shape the base, sand and finish. Sand sealer can now be applied. When dry, de-nib with 0000 wire wool.

In stage five, before parting off I remove the chuck with the earring stand in it and move to the bench vice to drill the holes on the stand.

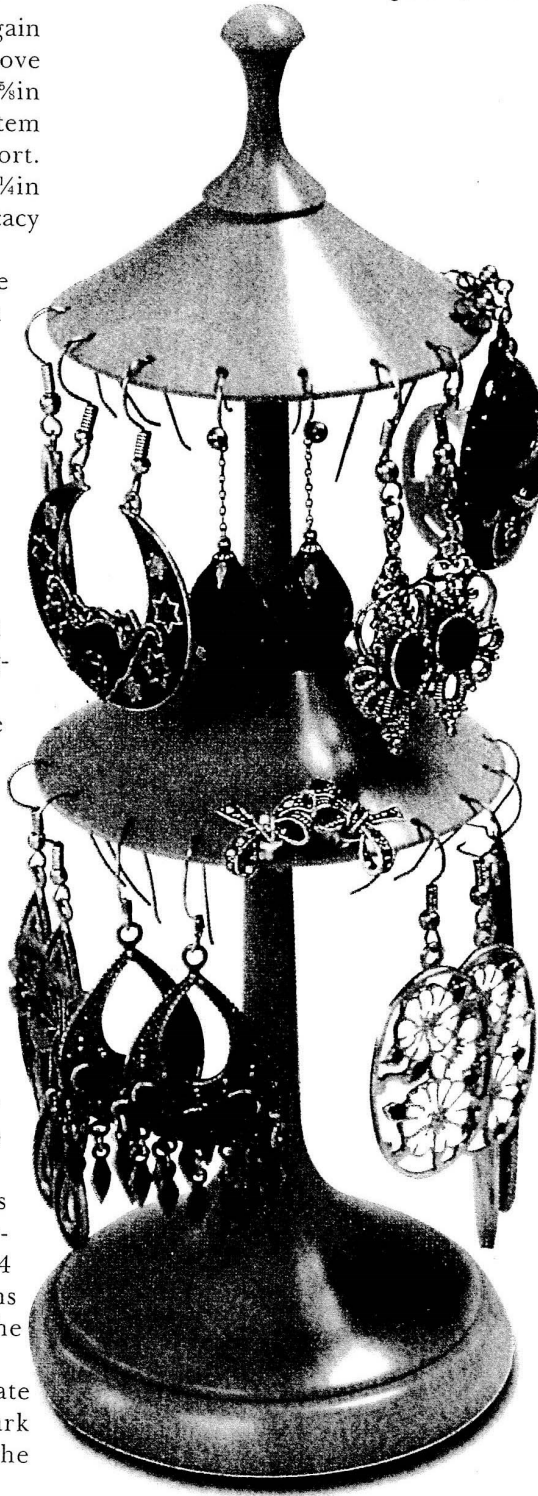
Hold the chuck in the vice while you mark and drill. Don't drill too close to the edge, or you may break away the edge and ruin the stand.

One method I frequently use is to make a scale template of the earring stand's top. Divide this into 24 segments and mark hole positions by compass 2mm, ¾in from the edge.

Cut the centre from the template and place onto the stand top. Mark the hole positions through the template with a compass point.

Re-mount the stand on the lathe and part off – carefully. Try to ensure a slight concave base so your 'masterpiece' doesn't rock. Finish the

*Earring stand, bedecked with jewellery.*



---

**All that remains is for you to present your stand to your wife or girlfriend, and bask in her approval.**

---

base by power sanding, followed by 320 wet and dry.

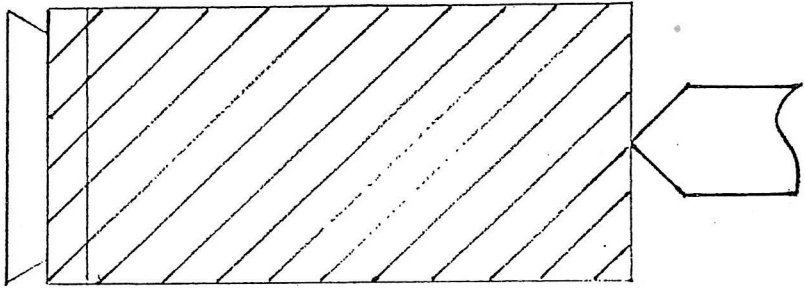
Inspect the stand closely, then finish with two coats of Danish oil and a good quality polish. Take care not to get polish into the holes, as it might contaminate the earring hooks.

For the more adventurous, a double or triple stand complements the single. They can be turned without tailstock support.

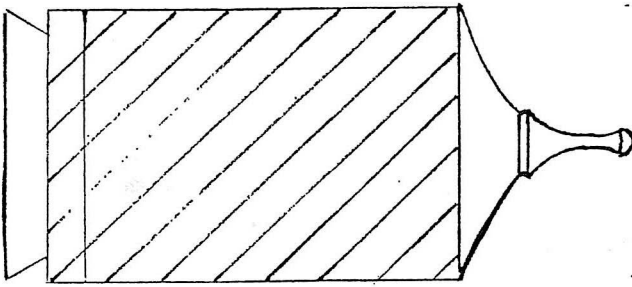
All that remains is for you to present your stand to your wife or girlfriend, and bask in her approval. ■

1/2 SCALE

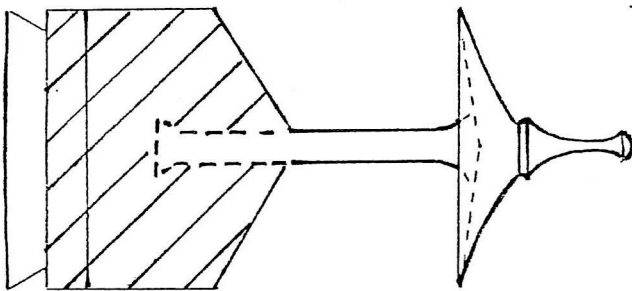
STAGE 1



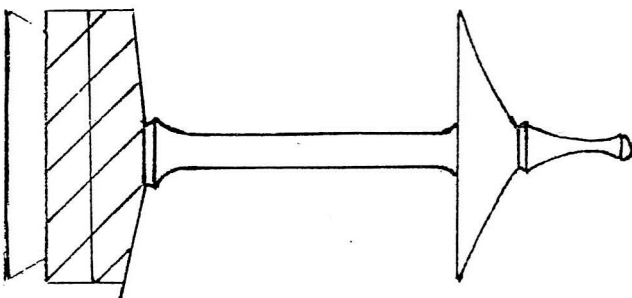
STAGE 2



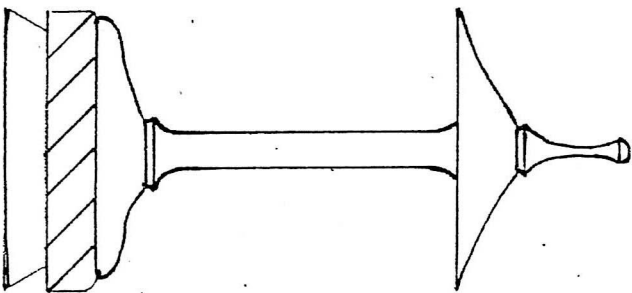
STAGE 3

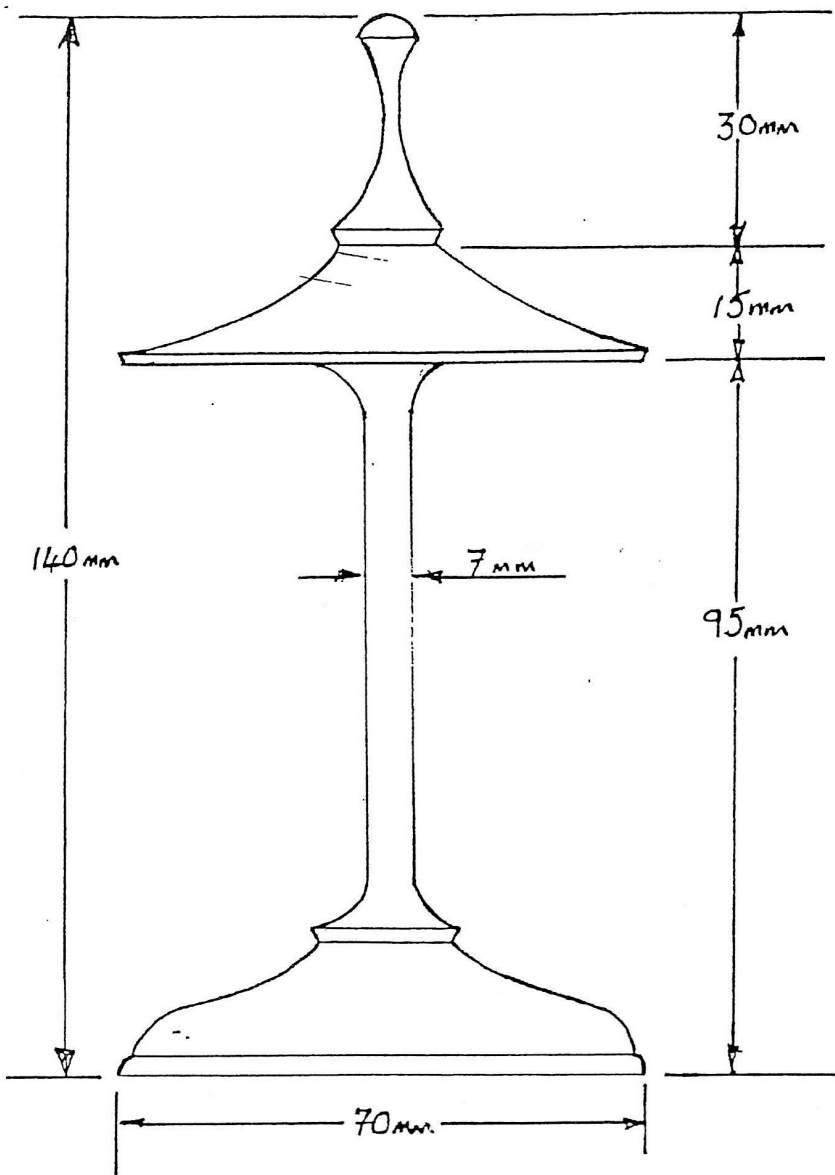


STAGE 4

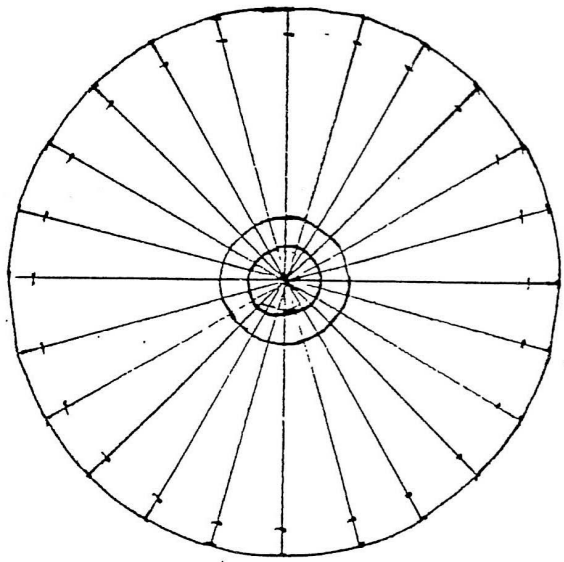


STAGE 5





ACTUAL SIZE



TEMPLATE FOR HOLES